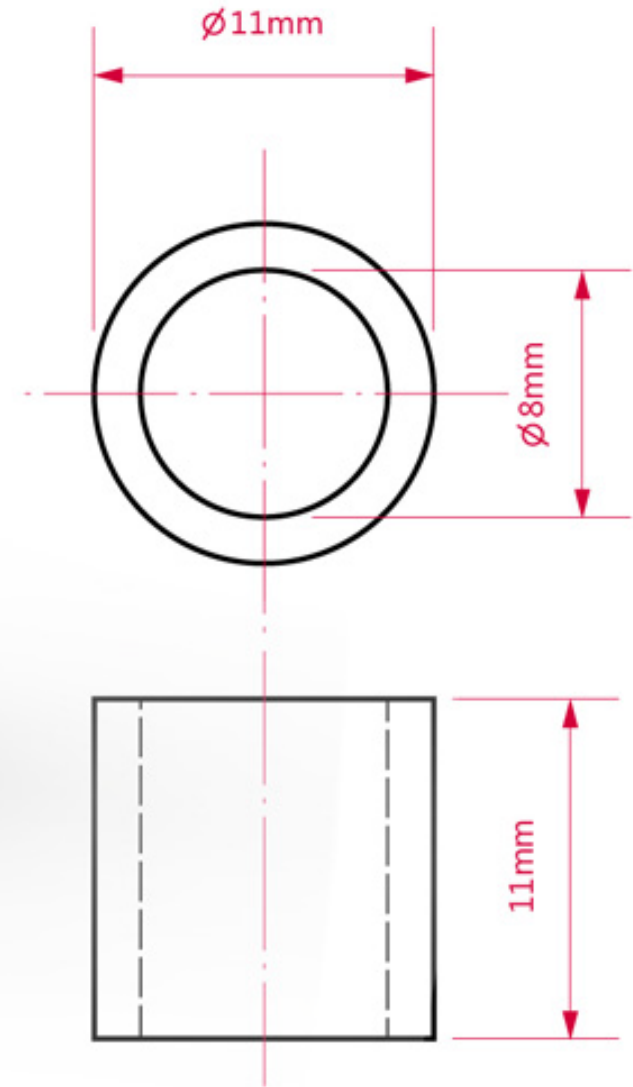


Products & accessories

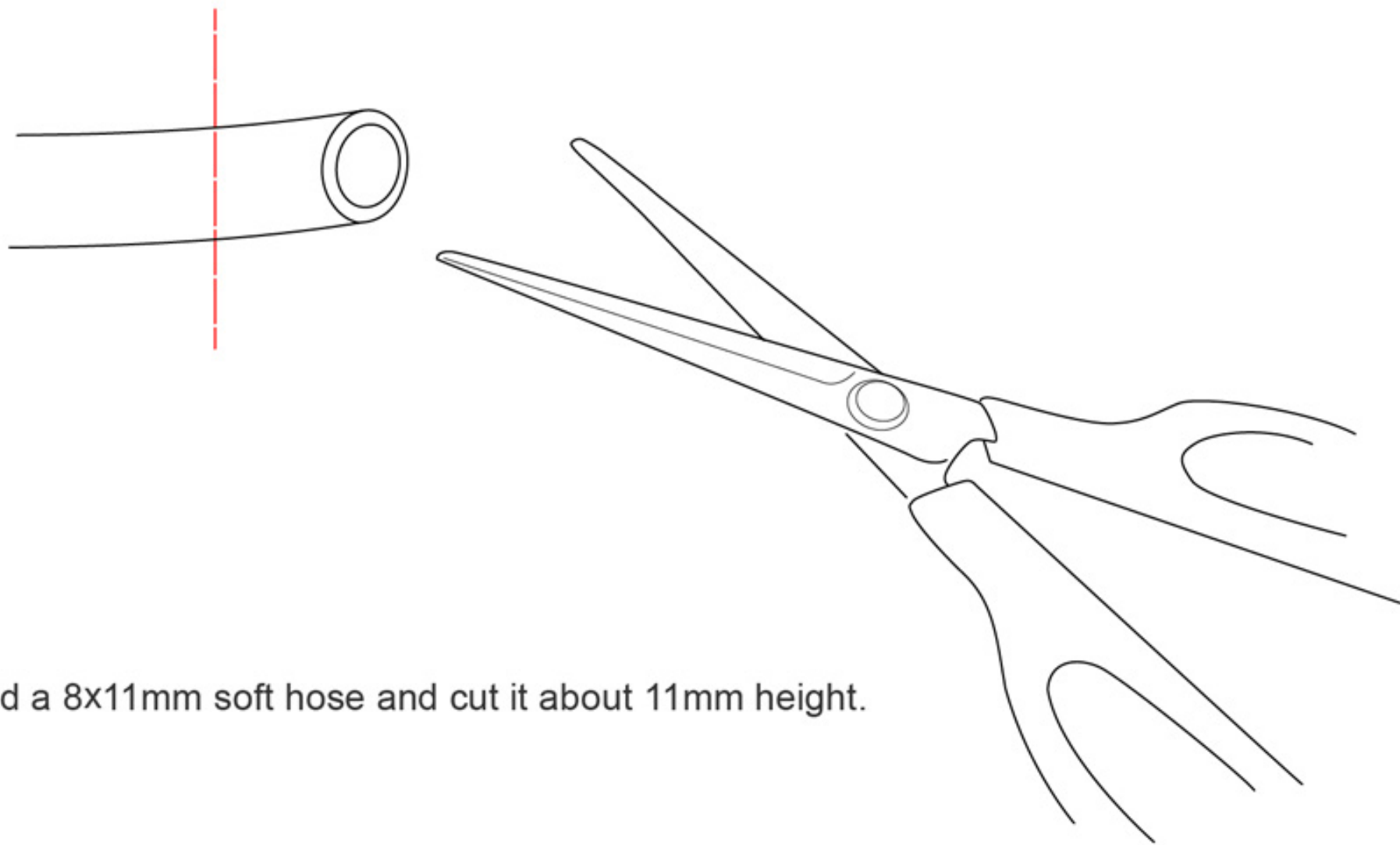
This dimension of racing ring is fit for GPS tracker ring.



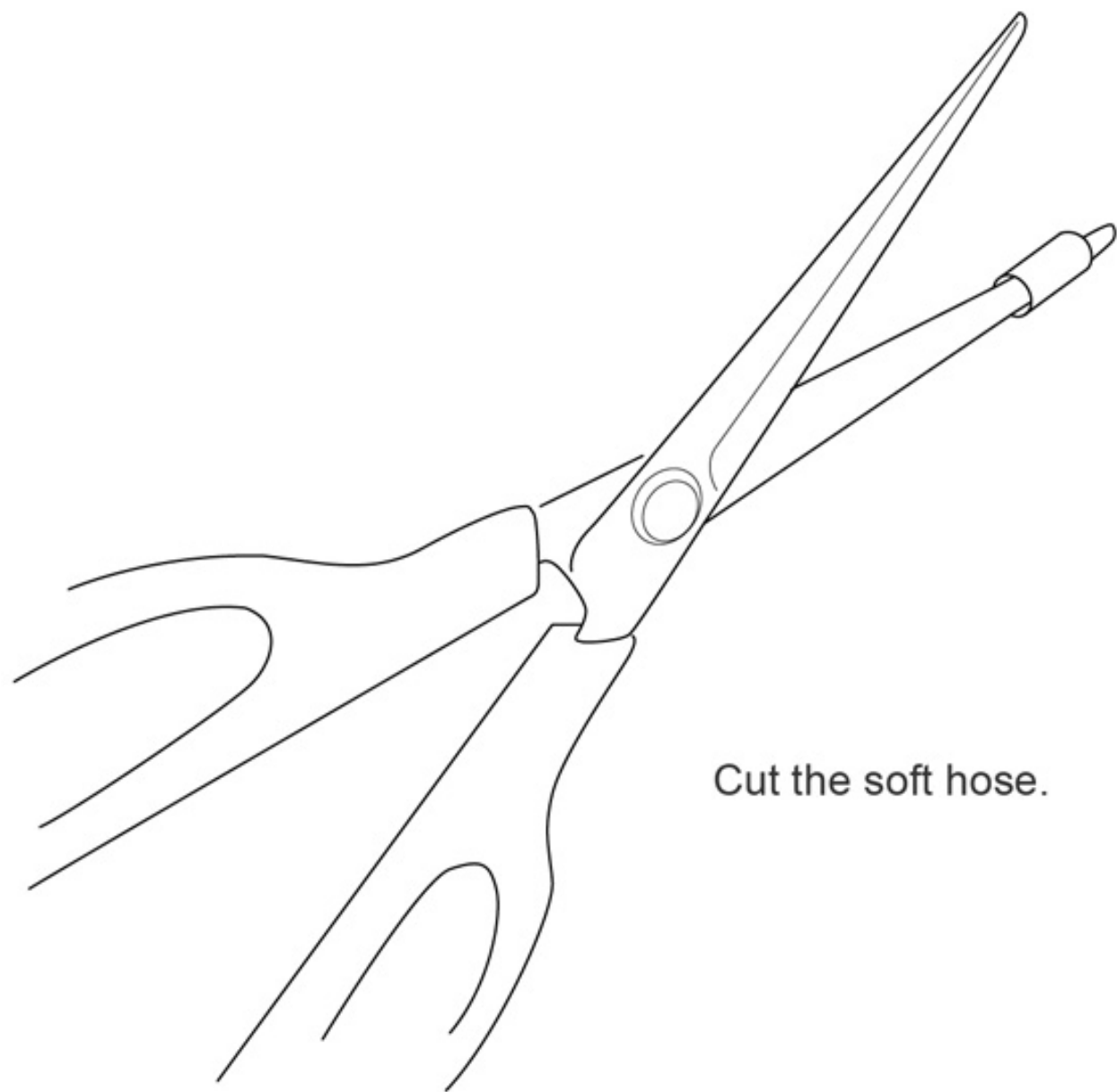
Reference Dimension for racing ring.

Step1.

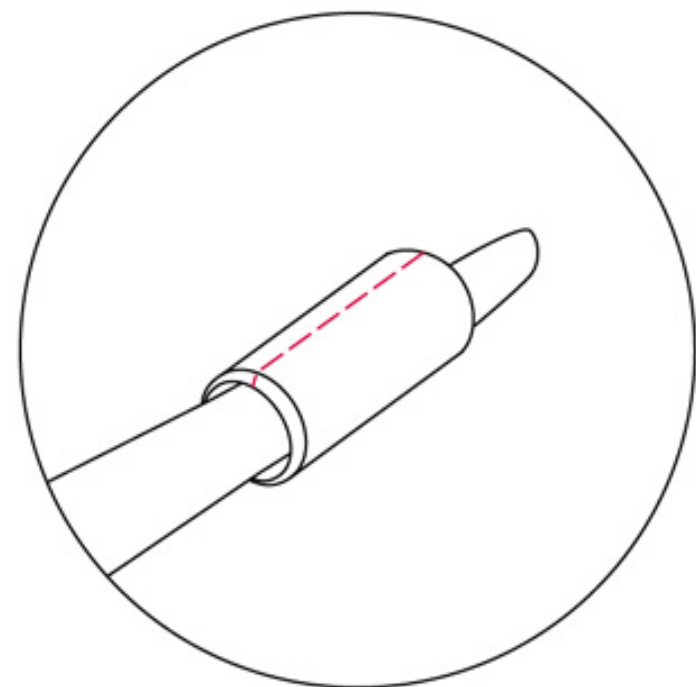
If the racing ring is unfit, take a soft hose as racing ring. It can help you avoid GPS tracker ring dropping down from pigeon's leg.

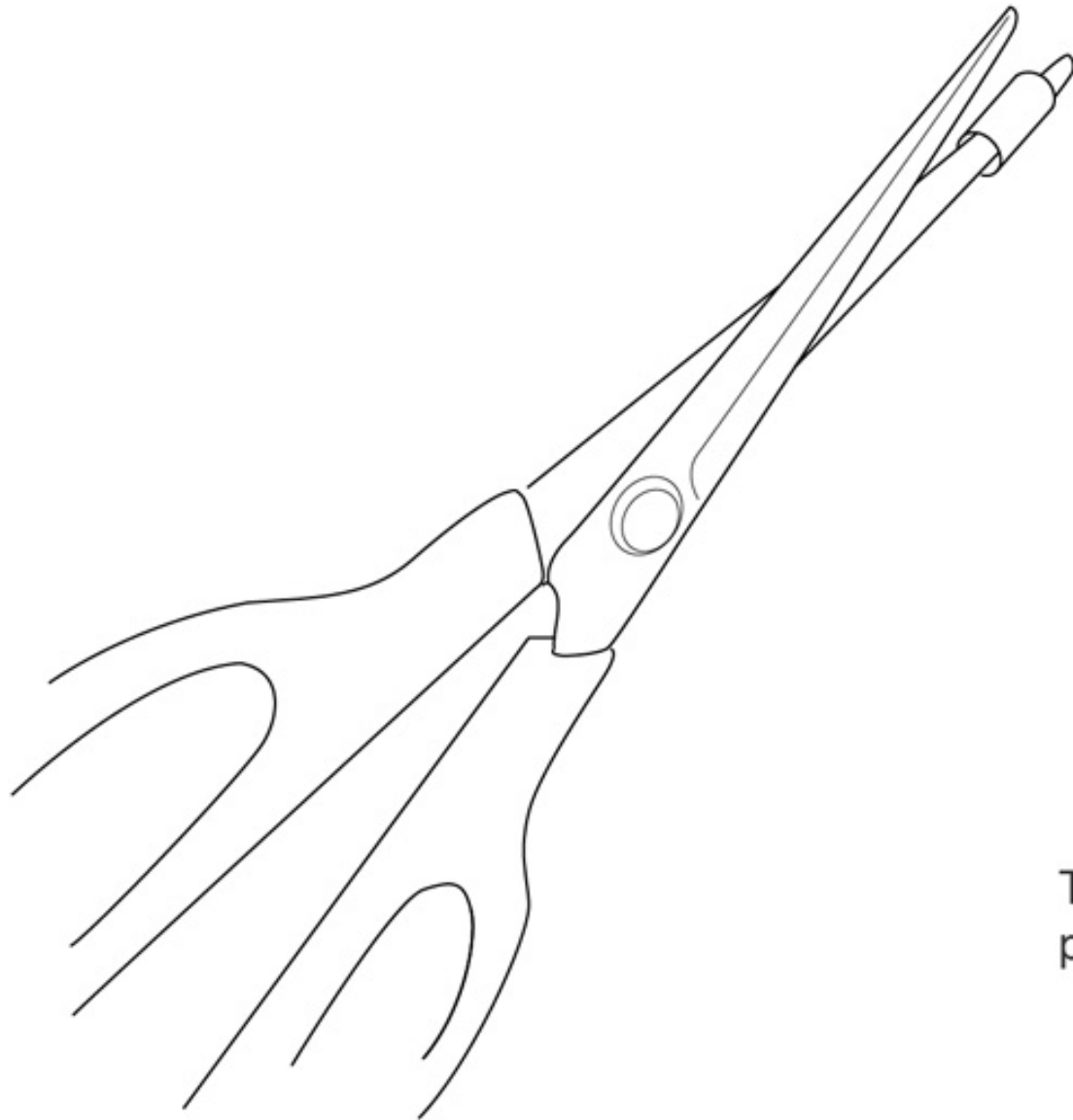
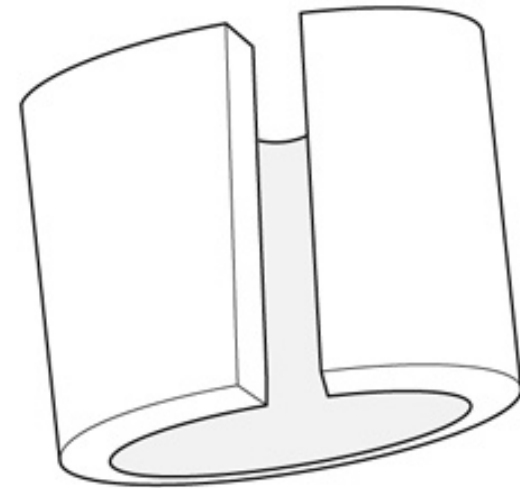


Find a 8x11mm soft hose and cut it about 11mm height.

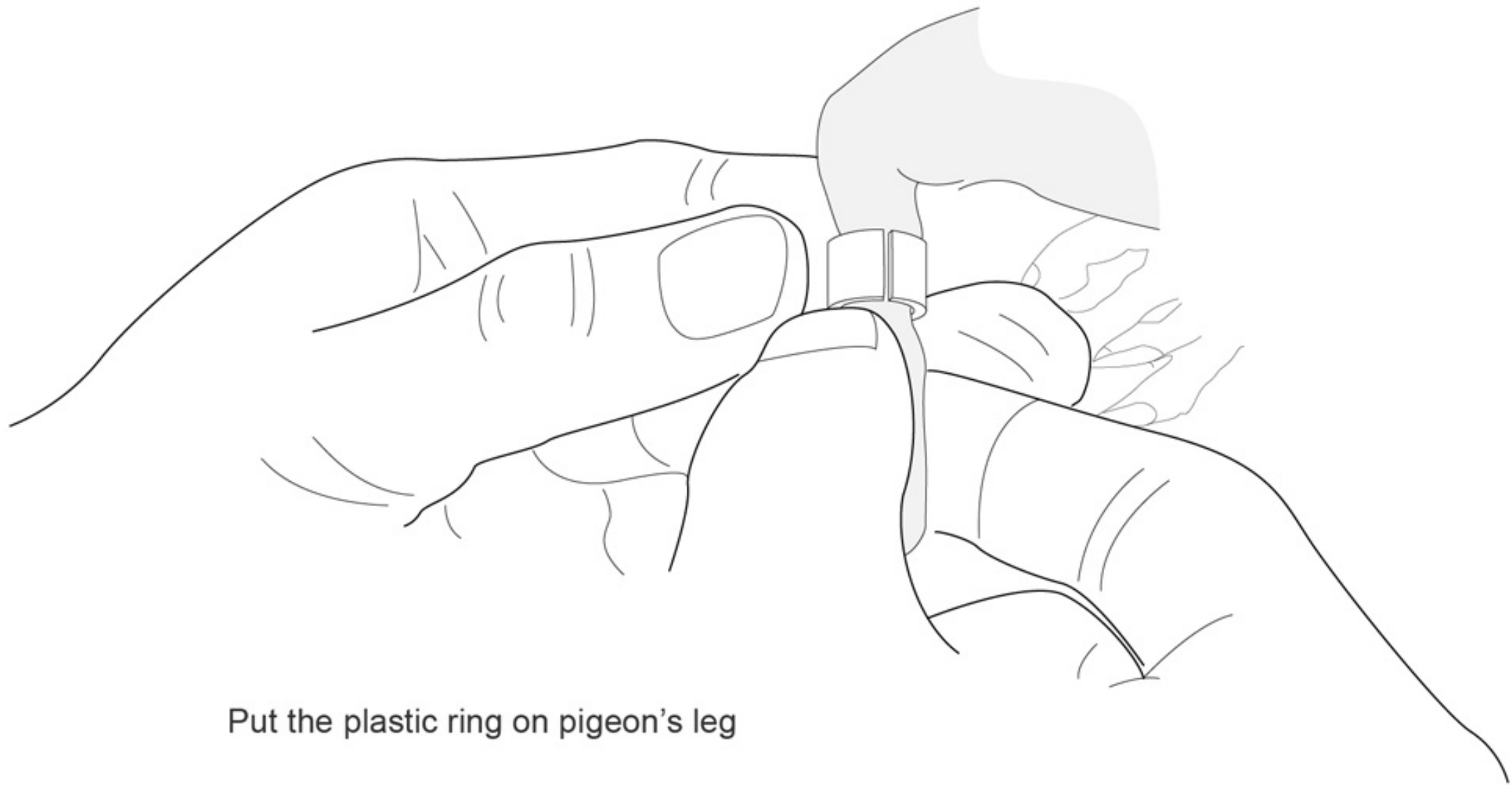
Step2.

Cut the soft hose.

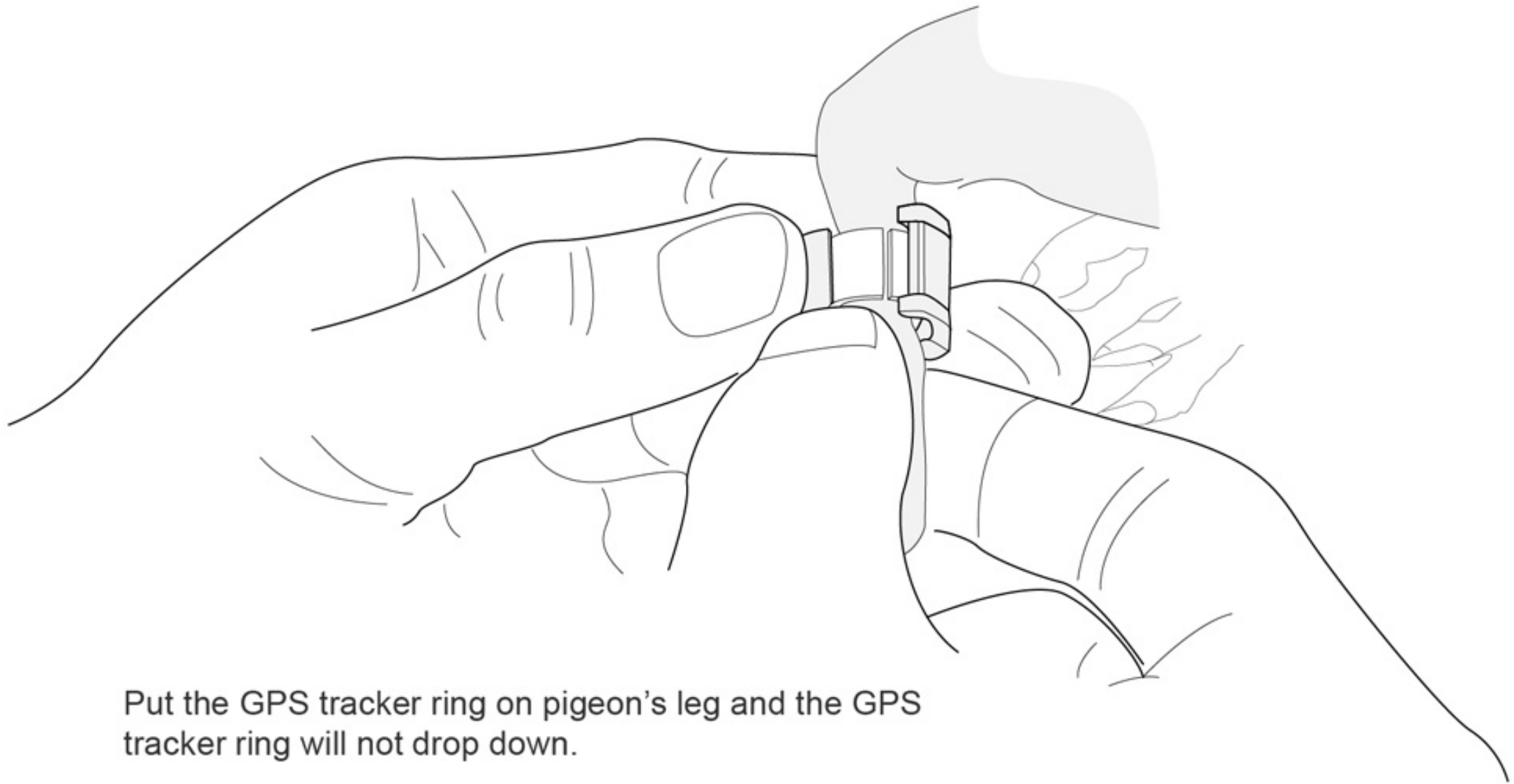


Step3.**CUT!!**

The plastic ring will be opened and you can put it on pigeon's leg.

Step4.

Put the plastic ring on pigeon's leg

Step 5.

Put the GPS tracker ring on pigeon's leg and the GPS tracker ring will not drop down.

! Friendly reminders for using this product

Things to be kept in mind regarding the operating procedure:

Please charge the battery after obtaining the product.



Be careful while placing the ring onto the ring reader. If the ring is placed onto the ring reader by force or improperly, the chance of damaging the detector needle of the ring reader will increase.



Please do not improperly contact the positive or negative sides OR use the same metal object to touch the positive and negative ends of the battery at the same time that might result in short-circuited battery.



Please be careful while inserting or retracting the ring's battery. If the incorrect method is used while installing or retracting the battery, the chance of damaging or bending the contact metal in the GPS rings will increase.

/// Friendly reminders for using this product ///

Reminders on installing and reading GPS ring's software:



Confirming the success of contact between gps_client software and the ring reader.



Before setting GPS ring, please make sure that the battery is fully charged in order to prevent inadequate battery power, causing the loss of the flight path record due to the deficit of battery power.



After the time has been set for the GPS ring, please do not detach the battery. In case the battery itself is separated from the GPS ring, it will be the same as the time not being set. Therefore, it must be set again.



After finishing reading the GPS ring for the flight path, the file for the record will be stored in the db file. (It will be distinguished/identified based on the current date.)

Friendly reminders for using this product

Reminders on the test of wearing the GPS ring :



While wearing the GPS ring, the door must be closed in order to receive the signals with stability.



If anything blocks the metal aluminum foil stickers or other accessories while wearing the GPS ring, receiving any signal will be impossible, causing no record of the flight path.



Reference Dimension for racing ring: 8*11*11 mm. Don't use the racing ring that the ingredient has metal and aluminum.



After setting the GPS ring, avoid putting it in the pocket, holding your hands, or next to the insulation paper of a car; otherwise, the reception of the signal will be affected, causing the loss of record on flight path.